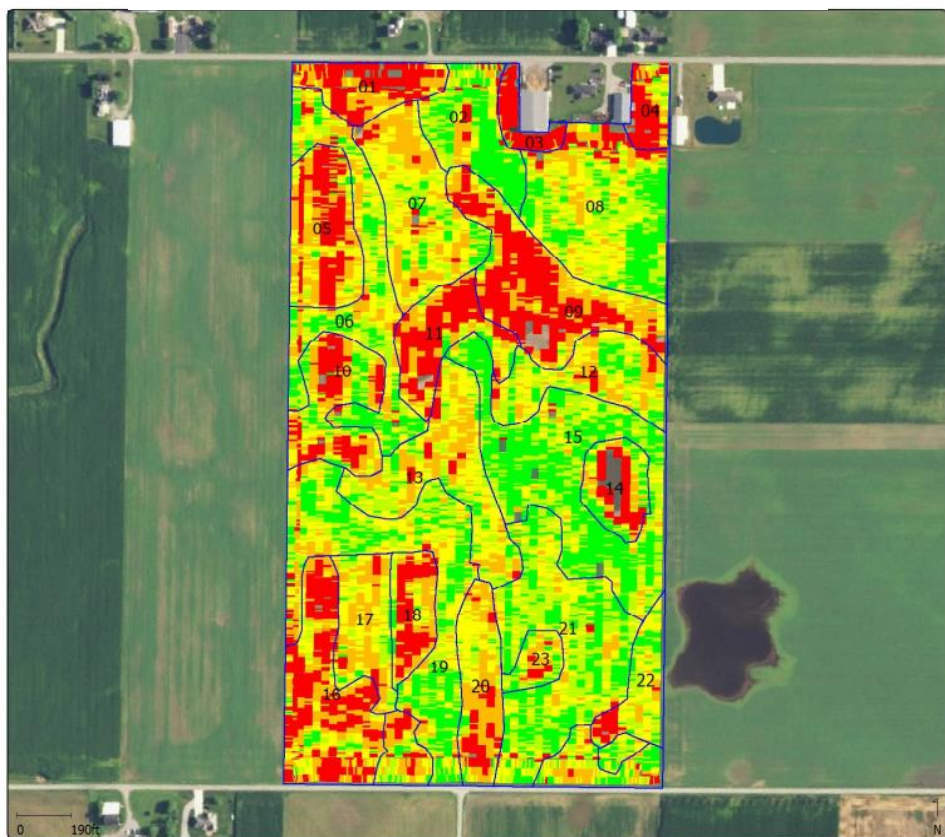


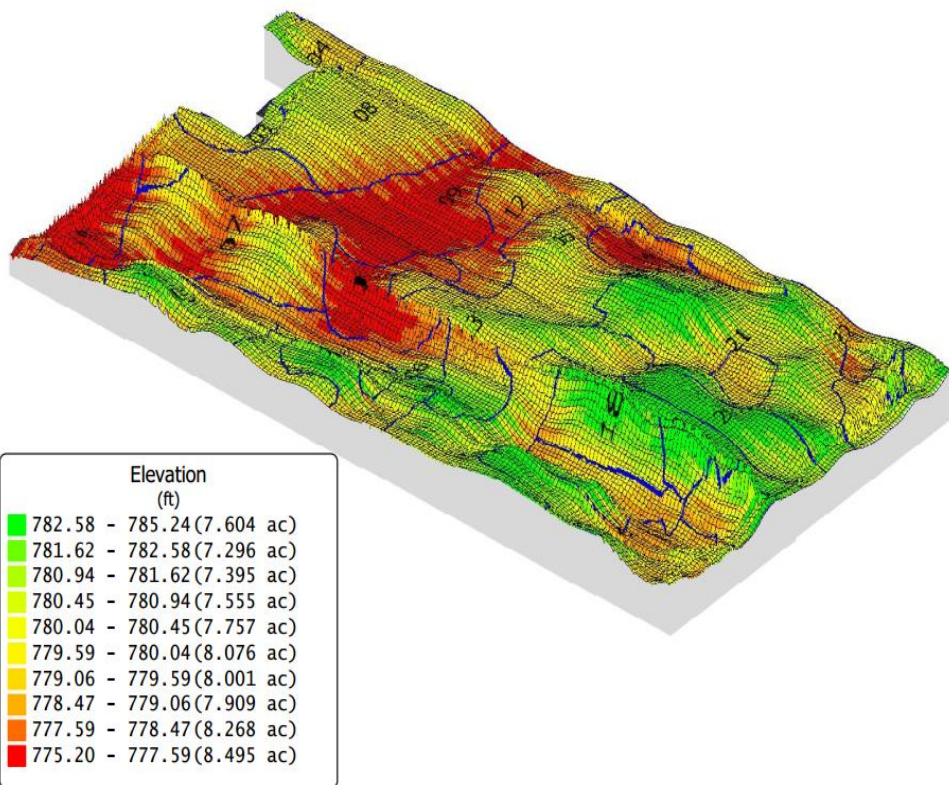
Zone Sampling Layout

Management zones are created in a GIS mapping software using aerial imagery, soil type data, yield data, and topography maps. These zones can vary in size depending on different variables. Multiple sample cores are taken throughout a zone to accurately represent each zone. Variable Rate fertilizer recommendations are created using the soil test results.

All Past Years Yield Data (if available)



LIDAR Elevation Data



Multiple Years of Past Aerial Imagery



Complete Soil Test with micronutrients for Each Zone

Soil Sample ID	Total Exchange Capacity (meq/100g)	Soil OM (%)	Soil P1 (ppm)	Soil K (ppm)	Soil pH (f1)	Soil BpH (f1)	Soil MG (ppm)	Soil %CA (%)	Soil %MG (%)	Soil %K (%)	Soil %H (%)	Soil Sulfur (ppm)	Soil ZN (ppm)	Soil B (ppm)	Soil MN (ppm)
01	26.47	3.470	48.00	121.00	6.900	7.200	687.00	70.89	21.63	1.170	1.500	10.00	4.180	0.710	14.00
02	14.08	2.390	54.00	118.00	6.800	7.000	346.00	69.03	20.48	2.150	3.000	8.000	3.530	0.650	16.00
03	22.27	1.760	35.00	189.00	8.000	8.000	326.00	81.50	12.20	2.180	0.00	36.00	4.750	0.570	74.00
04	18.52	3.470	66.00	182.00	7.000	7.400	432.00	73.11	19.44	2.520	0.00	11.00	4.050	0.680	25.00
05	10.15	1.730	22.00	76.00	6.700	7.200	236.00	68.77	19.38	1.920	4.500	11.00	1.180	0.260	37.00
06	16.43	2.590	38.00	120.00	6.300	7.300	355.00	64.06	18.01	1.870	10.50	8.000	2.300	0.510	17.00
07	13.27	2.340	33.00	127.00	7.300	8.000	398.00	67.82	24.99	2.450	0.00	8.000	3.190	0.540	32.00
08	17.59	3.080	42.00	145.00	6.300	6.700	360.00	64.67	17.06	2.110	10.50	9.000	3.090	0.760	27.00
09	24.84	3.870	72.00	156.00	6.900	7.400	585.00	72.36	19.63	1.610	1.500	8.000	4.660	0.790	21.00
10	10.57	1.750	23.00	90.00	6.900	7.500	228.00	73.13	17.98	2.180	1.500	7.000	1.710	0.250	39.00
11	19.36	3.600	74.00	117.00	6.700	7.400	455.00	69.32	19.59	1.550	4.500	8.000	4.170	0.710	12.00
12	13.83	2.330	46.00	146.00	6.600	7.400	291.00	68.19	17.53	2.710	6.000	9.000	2.840	0.760	13.00
13	10.38	1.820	26.00	96.00	7.300	8.000	327.00	66.33	26.25	2.370	0.00	7.000	2.370	0.300	54.00
14	24.84	4.670	119.00	345.00	6.300	7.200	460.00	64.79	15.43	3.560	10.50	13.00	5.200	0.650	9.000
15	12.68	2.440	33.00	99.00	7.100	8.000	274.00	75.12	18.01	2.000	0.00	6.000	2.190	0.650	54.00
16	11.37	2.090	40.00	119.00	6.300	7.300	232.00	64.16	17.00	2.680	10.50	7.000	1.820	0.270	29.00
17	22.13	1.990	22.00	106.00	7.700	8.000	433.00	78.29	16.31	1.230	0.00	11.00	1.790	0.460	102.00
18	9.790	1.640	26.00	106.00	7.000	7.500	240.00	71.55	20.43	2.780	0.00	8.000	1.520	0.400	58.00
19	18.01	3.270	181.00	262.00	7.200	8.000	242.00	80.29	11.20	3.730	0.00	11.00	21.91	0.830	31.00
20	9.610	2.050	36.00	116.00	6.500	7.200	218.00	64.88	18.90	3.100	7.500	8.000	2.100	0.230	53.00
21	21.06	1.860	17.00	84.00	7.200	8.000	273.00	83.52	10.80	1.020	0.00	11.00	1.240	0.500	55.00
22	18.41	2.800	20.00	107.00	7.400	8.000	419.00	74.33	18.97	1.490	0.00	9.000	2.000	0.590	38.00
23	19.60	3.240	81.00	211.00	6.800	7.400	374.00	72.63	15.90	2.760	3.000	10.00	3.870	0.670	39.00

Kyle Haselman
419-306-0220

Haselman Ag.
Independent Crop Consultant

Nate Mangas
419-615-0215